

### Our Community

United Way of Salt Lake partners with Granite School District and many other organizations to bring programs and resources to the children and families of South Kearns Elementary and the greater community. South Kearns is a Title 1 school and serves approximately 364 students with 78 percent of students qualifying for free or reduced lunch. 53 percent of students at South Kearns are minorities and 29 percent English Language Learners.

Services offered to students include afterschool programs, reading tutoring, service learning, athletic activities, and arts programs. In 2015-2016, South Kearns had an average of 17 percent of students proficient in Language Arts and 12 percent of students proficient in Math. As a turnaround school, we expect these numbers to increase steadily over the next few years. Through high-quality instruction, data teams, and the resources offered through the community school, partners will work together to improve proficiency.

### Our Goal

Staff, partners, and community members work together to create a positive learning environment for all children at South Kearns Elementary. Our goals focus on literacy, mathematics, and creating a greater sense of community. Specifically, we are focusing on doubling our percentage of students proficient in math by the end of the 2016-2017.



### Promise Partners

- Community Nursing Services
- Granite School District
- Kearns Public Library
- Latinos in Action
- Rocky Mountain Care
- Salt Lake County Youth Services
- SLCAP Head Start
- Take Care Utah
- Utah Food Bank
- Utah Health Access Project
- Utah Health Policy Project
- Utah Partners for Health
- United Way of Salt Lake

### For more information, contact:

#### Rosemary Mitchell

South Kearns Elementary Community School Director  
 (530) 598-1514      rosemary@uw.org

Give your time. Lend a hand. Every minute counts toward making a positive impact in others' lives.

#### To volunteer now, contact:

#### Heather MacDonald

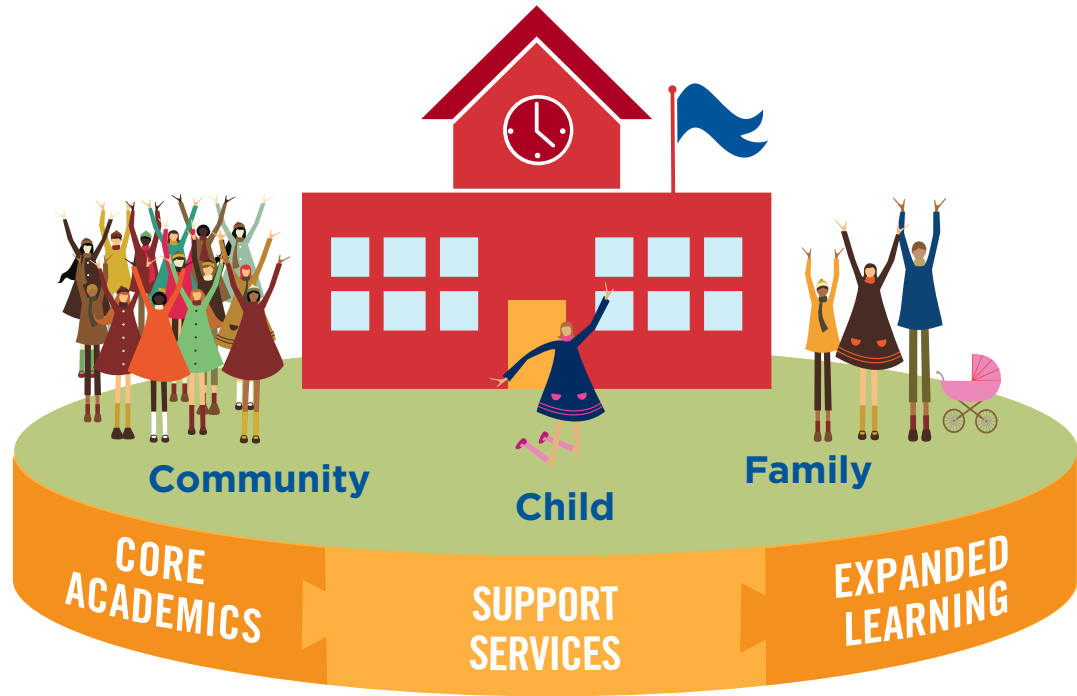
Volunteer Engagement Director, United Way of Salt Lake  
 (801) 736-7715      heather@uw.org  
 Log on to [uw.org/volunteer](http://uw.org/volunteer), or dial 2-1-1



# Community Schools

A NEW WAY OF TACKLING OLD PROBLEMS

Community schools provide opportunities for children, families, and communities. Partners integrate education, health, basic needs, tutoring, afterschool programs, and more to ensure kids are on track to succeed in school.



## Promise Partnerships by the Numbers\*:

7 PROMISE PARTNERSHIP COMMUNITIES

27 COMMUNITY SCHOOLS AND NEIGHBORHOOD CENTERS

150+ PROMISE PARTNERS

1000s OF VOLUNTEERS

80,000+ LOW-INCOME STUDENTS HAVE BEEN POSITIVELY IMPACTED IN OUR COMMUNITY