

Our Community

At Roosevelt Elementary, United Way of Salt Lake partners with Granite School District, the City of South Salt Lake, and many other organizations to provide programs and resources for families. Roosevelt Elementary serves over 500 students and is a Title 1 school. Ninety percent of students qualify for free and reduced price lunch. Roosevelt has a diverse population comprised of many immigrant and refugee families, with over 20 languages spoken at the school and 60 percent of students considered English Language Learners. This community school also has both a before school program and an afterschool program.

Our Goal

Our promise is that every student demonstrates grit by actively engaging in authentic experiences every day to become an inquisitive, self-confident, life-long learner who exhibits a positive attitude and respect for self and others.

“Working with United Way of Salt Lake has provided many opportunities for our community. United Way of Salt Lake and Roosevelt’s strong partnership allows resources and services for students and families to be aligned with developing the whole child. Teachers are able to focus on enriching students’ academic learning. Extended services are aligned to enhance students’ academic day and provide programming for families outside of the school day. Together, we are providing students and families with strong foundations for future success, both emotionally and socially”

– Malynda Cloward,
Roosevelt Elementary School Principal



Promise Partners

- AmeriCorps *Mentoring for Success*
- AmeriCorps *Read. Graduate. Succeed.*
- City of South Salt Lake
- Community Nursing Services
- English Skills Learning Center
- Family Dental Plan
- Granite School District
- Granite School District *Preschool Services*
- Health Action Project
- Latinos in Action
- Leaders in Action
- Salt Lake Community Action Program
- Sealants for Smiles
- Sunnyvale Refugee and Immigrant Center
- United Way of Salt Lake
- Utah Health Policy Project
- Utah Partners for Health

For more information, contact:

Meredith Muller

Roosevelt Elementary Community School Director
(785) 221-2525 meredith@uw.org

Give your time. Lend a hand. Every minute counts toward making a positive impact in others’ lives.

To volunteer now, contact:

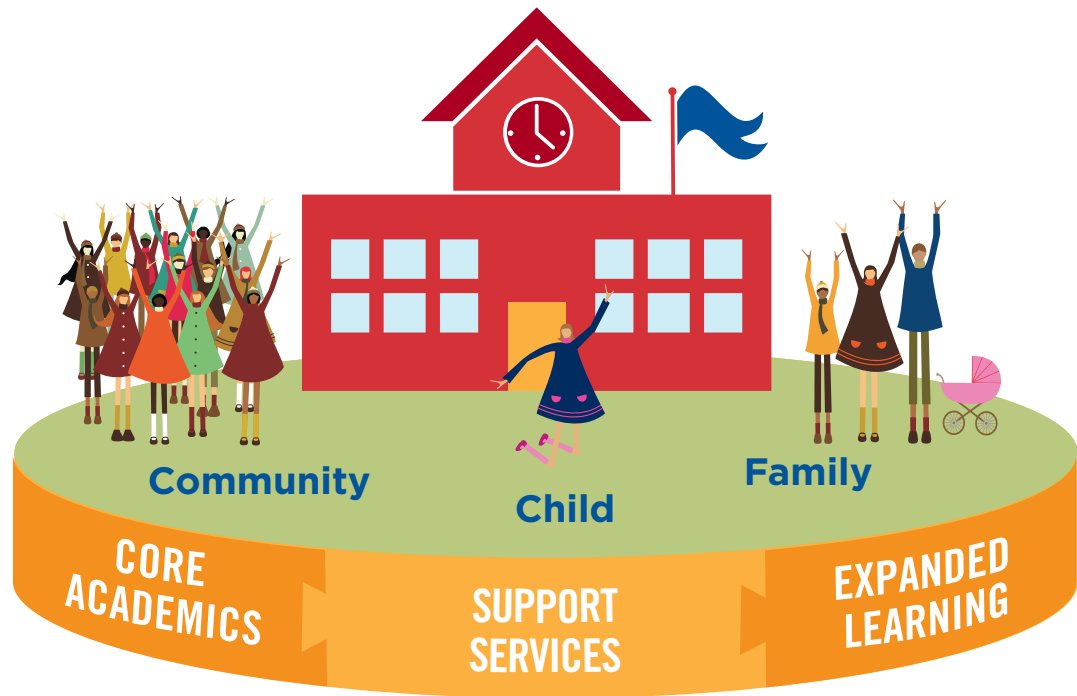
Heather MacDonald

Volunteer Engagement Director, United Way of Salt Lake
(801) 736-7715 heather@uw.org
Log on to uw.org/volunteer, or dial 2-1-1

Community Schools

A NEW WAY OF TACKLING OLD PROBLEMS

Community schools provide opportunities for children, families, and communities. Partners integrate education, health, basic needs, tutoring, afterschool programs, and more to ensure kids are on track to succeed in school.



Promise Partnerships by the Numbers*:

8 PROMISE PARTNERSHIP COMMUNITIES

43+ COMMUNITY SCHOOLS AND NEIGHBORHOOD CENTERS

170+ PROMISE PARTNERS

1,000's OF VOLUNTEERS

137,000+

LOW-INCOME STUDENTS HAVE BEEN POSITIVELY IMPACTED IN OUR COMMUNITY

@UWSL
UW.ORG

#BeAForceForGood

* Source: "2017 Results Matter Report of the Promise Partnership Regional Council", uw.org/research-and-reports

United Way
United Way of Salt Lake