

Our Community

Founded in 1951, Sandy Elementary has established a rich tradition of academic excellence despite unique challenges. About 63 percent of the Title I school's students qualify for free or reduced priced lunch, 12 percent have disabilities, and 21 percent are English Language Learners.

A school-wide breakfast program, literacy classes for parents, and the ever-popular "Shark School," which offers afterschool interventions for select students, are among the enhanced programs that the community school is able to offer with partners like the United Way of Salt Lake.



Our Promise

Sandy Elementary's promise is to ensure that all youth, especially those in the most vulnerable circumstances, succeed at school toward achieving the Canyons District mission of college- and career-readiness and successful citizenship.



Our Progress

School surveys suggest the community schools model is making a difference. A growing share of parents say learning problems are quickly identified at school and students are able to access needed supports. Over two school years, from 2012-13 to 2014-15, absences have dropped 26 percent and office discipline referrals have fallen 28 percent.

Promise Partners

- AmeriCorps
- Boy and Girls Club of Sandy
- Canyons Education Foundation
- Family Learning Centers
- InVision Eye Health
- Latinos in Action
- Playworks
- University of Utah Southern Utah
- United Way of Salt Lake
- Utah Food Bank
- Valley Behavioral Health
- YWCA

For more information, contact:

Isa Connelly

Sandy Elementary Community School Facilitator
(801) 826-9382 isa.connelly@canyonsdistrict.org

Give your time. Lend a hand. Every minute counts toward making a positive impact in others' lives.

To volunteer now, contact:

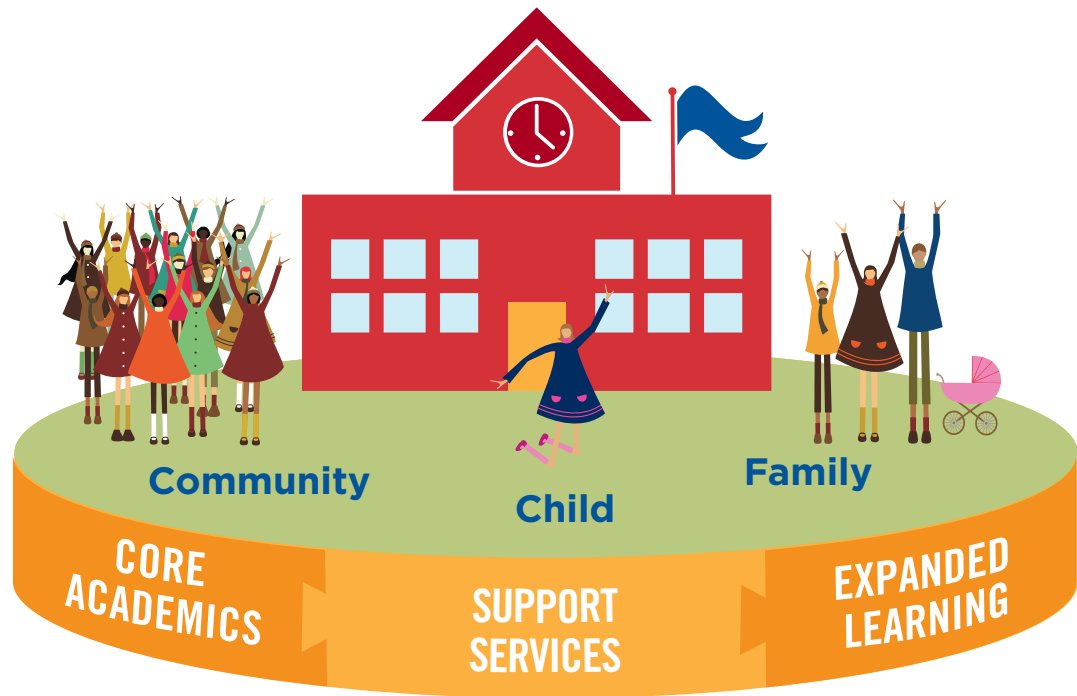
Heather MacDonald

Volunteer Engagement Director, United Way of Salt Lake
(801) 736-7715 heather@uw.org
Log on to uw.org/volunteer, or dial 2-1-1

Community Schools

A NEW WAY OF TACKLING OLD PROBLEMS

Community schools provide opportunities for children, families, and communities. Partners integrate education, health, basic needs, tutoring, afterschool programs, and more to ensure kids are on track to succeed in school.



Promise Partnerships by the Numbers*:

8 PROMISE PARTNERSHIP COMMUNITIES

43+ COMMUNITY SCHOOLS AND NEIGHBORHOOD CENTERS

170+ PROMISE PARTNERS

1,000's OF VOLUNTEERS

137,000+

LOW-INCOME STUDENTS HAVE BEEN POSITIVELY IMPACTED IN OUR COMMUNITY

@UWSL
UW.ORG

#BeAForceForGood

* Source: "2017 Results Matter Report of the Promise Partnership Regional Council", uw.org/research-and-reports

United Way
United Way of Salt Lake